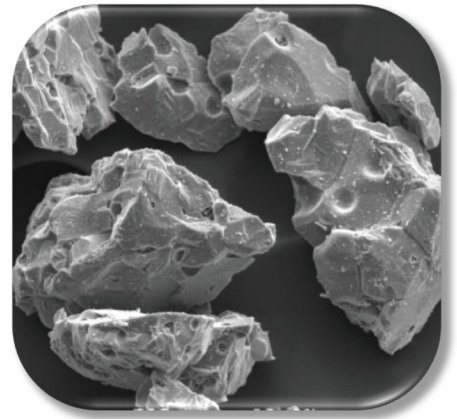


# Thermal Spray Powders Technical Datasheet



## Saint-Gobain Chromium Oxide with Titania

### POWDER CHARACTERISTICS

Product	Nominal Size	Color	Morphology
#306	25-95 micron	Black	Irregular
#307	15-63 micron	Black	Irregular

### TYPICAL CHEMISTRY

Cr <sub>2</sub> O <sub>3</sub>	TiO <sub>2</sub>	SiO <sub>2</sub>	Fe <sub>2</sub> O <sub>3</sub>	ZrO <sub>2</sub>	Al <sub>2</sub> O <sub>3</sub>	Free Cr
96%	3.5%	0.13%	0.15%	0.10%	0.08%	0.03%

### PROPERTIES AND APPLICATIONS

Saint-Gobain Chromium Oxide with Titania is a sintered and crushed powder with an irregular shape. The titania addition gives the powder an advantage in deposit efficiency and finishing characteristics when compared to pure chromium oxide. The titania also increases wear resistance by solidifying between the grains and reducing grain pull out in the coating. Essentially free of chromium metal, these powders are very corrosion resistant.

This material is often used for wear and corrosion resistant applications on pumps, shafts, seals, pistons and rolls. Choosing a coarser particle size allows for building thicker coatings while finer particle sizes are ideal for repair work where fine finishes are required.

CoatingSolutions@Saint-Gobain.com | [www.coatingsolutions.saint-gobain.com](http://www.coatingsolutions.saint-gobain.com)

© Saint-Gobain Specialty Grains and Powders, January 2020

SAINT-GOBAIN COATING SOLUTIONS

The information contained in this document is believed to be accurate and reliable but is presented without guarantee or warranty on the part of Saint-Gobain Ceramics and Plastics Inc. Nothing herein should be interpreted as an authorization or inducement to practice any patented invention without a license.

